



Situation Report

Adamawa State Ministry of Health



TITLE	2019 Cholera Outbreak Situation Report
SERIAL NUMBER	59
EPID-WEEK	40
DATE	4 th October, 2019

Highlights

- Two new cases reported from 30th September to 4th October, 2019 (both cases, each from Yola North and Yola South LGAs were recorded on 2nd October, 2019).
- Total case count now stands at 782 with 4 deaths. CFR=0.51%
- No new settlement or ward has been infected.

Epidemiological Summary

The total number of cases reported as at 4th October, 2019 stands at 782 with 4 deaths (CFR=0.51%), Yola North has 477 cases with 2 deaths (CFR= 0.42%); Girei has 193 cases with 1 death (CFR= 0.52 %), Yola South has 111 cases with 1 death (CFR= 0.90 %) and Song has 1 case with 0 death (CFR= 0 %). So far, 189 samples yielded growth suggestive of *Vibrio cholerae* on culture and results of 14 isolates from the reference laboratory revealed 01 serotype.

Table 1: Number of cases, deaths and samples tested for Cholera in Adamawa State, as at 4th October, 2019.

	Yola North	Girei	Yola South	Song	Total
Cases					
New suspected Cholera cases	1	0	1	0	2
Cumulative suspected cholera cases	477	193	111	1	782
Deaths					
New deaths	0	0	0	0	0
Cumulative deaths	2	1	1	0	4
Laboratory					
Number of specimens collected	287	77	75	1	440
Number of specimen (RDT +ve)	158	51	37	1	243
Number of specimen (Culture +ve)	114	45	21	1	189
Number of specimen (01 serotype)	8	5	1	0	14



Adamawa State - Nigeria: Number of Suspected Cholera Cases Reported Between 15th May to 2nd October, 2019

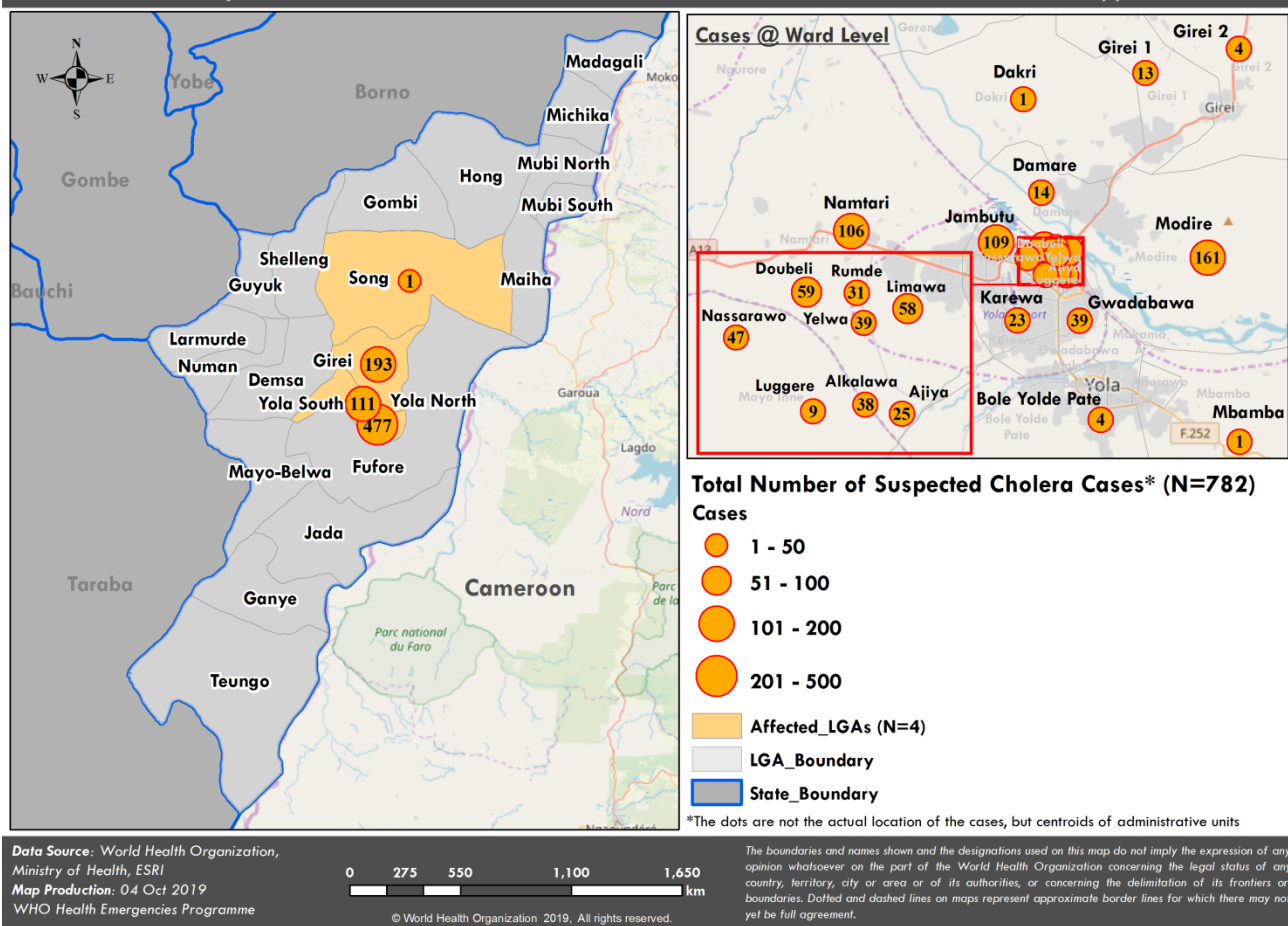


Figure 1: Map of Adamawa State showing cases of suspected Cholera in the affected Wards of the four Local Government Areas

Table 2: Distribution of Water point chlorination in the affected LGAs in Adamawa State, 2019.

	Girei	Song	Yola North	Yola South	total
No of water points mapped	93	0	54	23	170
No of water points tested	16	0	32	16	64
Number and % of contaminated water points	14(88%)	0(0%)	23(72%)	16(100%)	53(83%)
Number and % of water points being chlorinated	7(8%)	0(0%)	12(22%)	20(87%)	39(23%)
Number and % of water points not being chlorinated	86(92%)	0(0%)	45(78%)	3(13%)	134(77%)



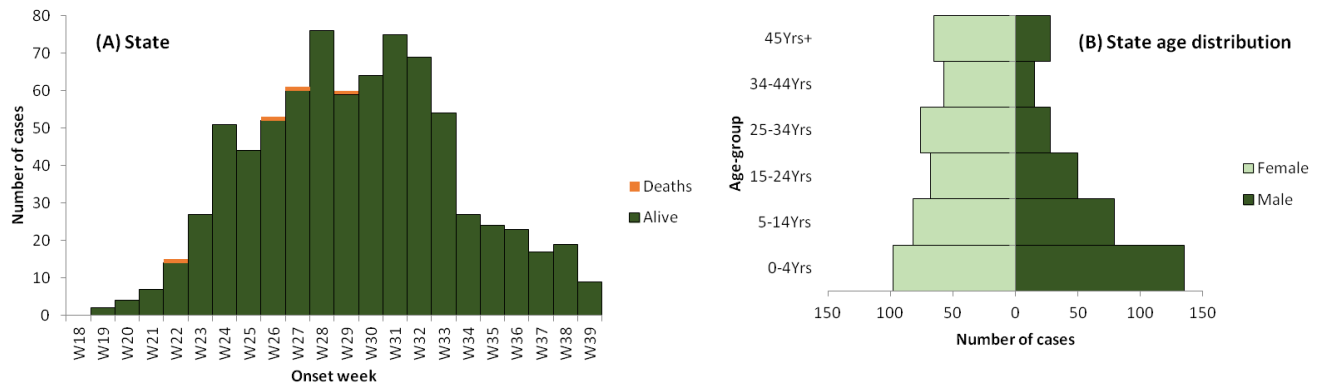


Figure 2: (A) Weekly Epi-curve of suspected cholera cases in Adamawa State (Weeks 19-340), (B) Age-sex distribution of suspected cholera cases in Adamawa State

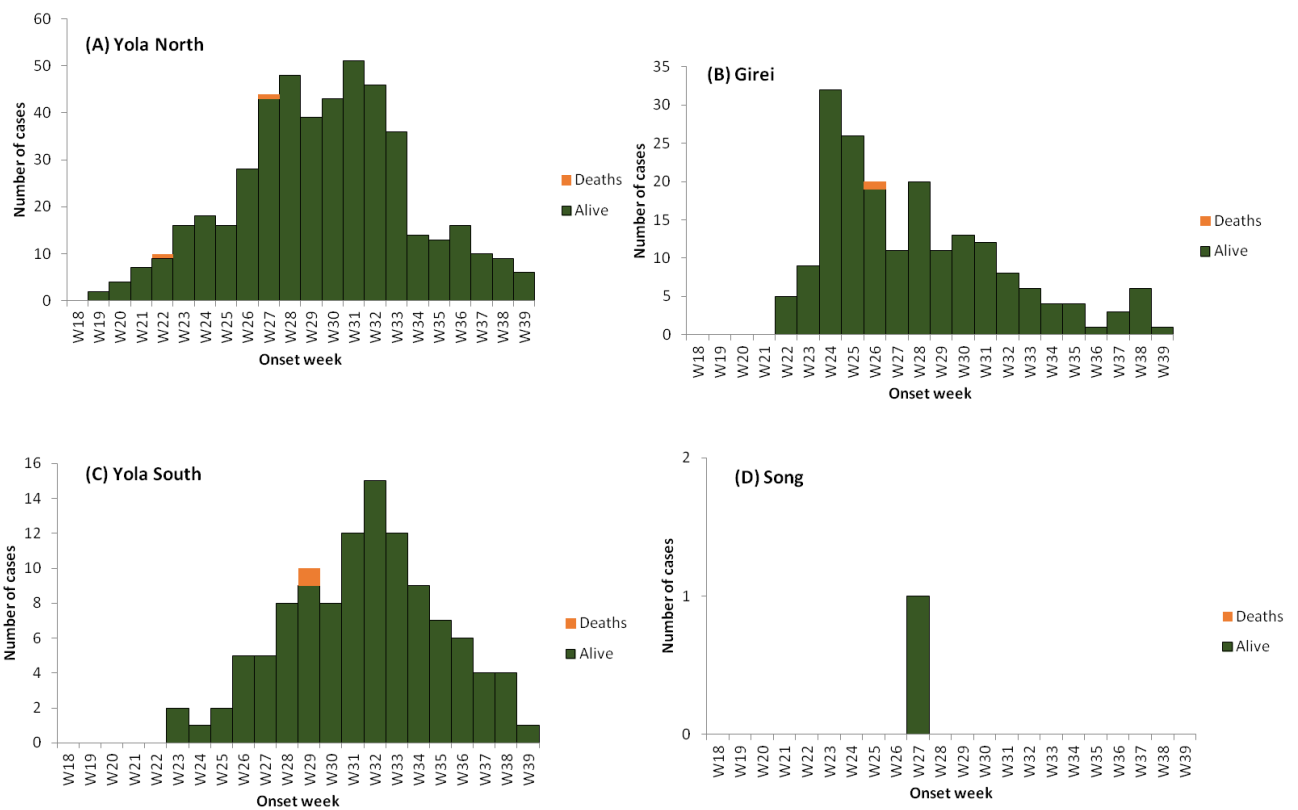


Figure 3: Weekly Epi-curve of suspected cholera cases in (A) Yola North, (B) Girei, (C) Yola South and (D) Song (weeks 19-40)

Surveillance and laboratory

- **WHO ACS** teams visited **785** households in Yola North, Yola South and Girei
- Since the onset of the outbreak the **WHO ACS** teams have visited **63,149** households in 26 wards in Yola North, Yola South and Girei and reported **222** suspected cases of cholera

Case management

- Two new admissions and 2 discharges. No death recorded.

WaSH

Water point Chlorination

- 84,738 litres of water was chlorinated at 8 water points in Doubeli and Jambutu of Yola North LGA by **Unicef** and **ADRUWASA** supported volunteers.
- 1,712,062 litres of water was chlorinated at 28 water points in Girei, Yola South LGAs by **IRC** supported volunteers
- 445,000 litres of water were chlorinated in 6 water points and 19 wells in Yola North by **IOM** supported volunteers
- **IRC and IOM** also supports the testing of free residual chlorine (FRC) in water at the water points

Hygiene Promotion

- 2,113 people in 296 Households reached by hygiene messages in Yola North LGA by **Unicef** supported volunteers. Also distributed 18,960 Aquatabs
- 22,058 people in 2,350 households were reached with key hygiene messages in Girei LGA, Yola South and Yola North LGAs by **IRC** supported Volunteers.
- 2,429 individuals from 722 HH were sensitized with key hygiene messages by **IOM**

Disinfection

- 105 public waste disposal sites, 160 latrines and 380 households were disinfected by **IRC** supported volunteers
- **Unicef** supported volunteers disinfected 85 households, 67 latrines, and 93 drainages in Doubeli and Jambutu of Yola North LGA

Risk communication

- TV and Radio programmes and jingles on cholera prevention messages supported by **Unicef** is still ongoing
- WHO supported community Health Champions visited 3522 households, and sensitized 5941 people. Since the beginning of the outbreak, WHO supported Community Health Champions have visited a total of 57,725 households, sensitized 105,157 people and identified 129 suspected cases

Dr Pembi Emmanuel
State Epidemiologist
(07068115161, 07010408293)

Dr Jerry Pantuvo
WHO Surveillance Officer
(08061203546, 08126371508)