



South Sudan: Cholera Outbreak - Oct 2024

Status: Ongoing

Glide: EP-2024-000201-SSD

Disaster description

The Ministry of Health has declared a cholera outbreak today in Renk, Upper Nile State. This declaration comes after reports of 44 suspected cholera cases, and six laboratory-confirmed cases on 23 October 2024 in Renk, Upper Nile State. As of 27 October 2024, 49 cholera cases have been reported among refugees, returnees, and local communities. The first suspected case was reported on 28 September 2024 after the County Health Department received a report of a suspected case of cholera at the point of entry in Renk, a border town between Sudan and South Sudan. In response, the Ministry of Health, the World Health Organization, and other partners are taking steps to manage the outbreak. In a press conference in Juba, Health Minister Honorable Yolanda Awel Deng assured citizens that the government is committed to stopping the spread of cholera in Renk, Upper Nile State. "The Ministry of Health is aware of the difficult conditions refugees and returnees face, such as overcrowding and poor water and sanitation, which can lead to outbreaks; however, the Ministry is working with health and water sanitation and hygiene cluster partners on the ground to ensure that the risk of the outbreak spreading is minimized," said Hon. Deng. She also added that the Ministry of Health and WHO have taken steps to proper management of cases reported, ensuring that every-contact on the ground is followed. She urged the communities to practice good and safe behaviors, such as consistent hand washing, use of latrines, and proper food handling throughout the outbreak season. ([WHO, 28 Oct 2024\(https://reliefweb.int/node/4105249\)](https://reliefweb.int/node/4105249))

Eighty-two cumulative cases of cholera have been confirmed in the country as of 5 November. This includes one confirmed case in Juba Gorom IDP camp, of an individual having recently arrived from Sudan, via Renk transit area in Upper Nile state. The death of two children has also been reported in Renk, both having similar profile, undernourished under five years old children. The Health response is extending through surge response teams to increase detection and treatment, distribution of cholera kits and WHO request for vaccination (OCV). In parallel, the WASH actors are also mobilising their means for chlorination, disinfection and sensitisation of the population. ([ECHO, 6 Nov 2024\(https://reliefweb.int/node/4108316\)](https://reliefweb.int/node/4108316))

Cholera continues to spread in South Sudan, reaching 21,389 cases and 390 deaths as of 17 January. 52 % of patients are in the age group of zero to 14 years with majority of deaths among patients who are 60+ (19%) and zero to 4 years (18%). Cholera cases have now reached seven out of ten states and one administrative area, out of which Rubkona accounts for 47% of the cases. While the total case fatality rate (CFR) is at 1.8%, some counties show concerning figures. Vaccination campaign is completed in Renk and ongoing in three states. An increased influx of more than 120,000 people from Sudan since early December 2024 due to renewed hostilities near the border presents a further risk of cholera spreading to new areas. In order to

support the response to the ongoing cholera outbreak, DG ECHO's European Humanitarian Response Capacity (EHRC) delivered urgently needed 4,290 boxes of PUR tablets for water disinfection from its stock in Dubai to its partner IOM in Juba. ([ECHO, 17 Jan 2025](https://reliefweb.int/node/4125927))

During the past seven days, 991 cholera cases including 11 deaths were reported from 25 counties. This brings the total number of cases reported since the beginning of the outbreak to 31 871, across 36 counties, seven states and one administrative area. The total number of cholera related deaths reported so far is 536 (CFR 1.7%) including 280 health facility deaths. ([ECHO, 27 Feb 2025](https://reliefweb.int/node/4136168))

Cumulatively, 40,231 cases with 694 deaths (CFR 1.7%) have been reported from 11 states across the country as of 16 March 2025. ([WHO, 27 Mar 2025](https://reliefweb.int/node/4142399))

Hide full description

Affected Countries

[South Sudan](https://reliefweb.int/country/ssd)

Latest Updates

[South Sudan](/country/ssd) + 1 more **[UNICEF South Sudan Humanitarian Situation Report No. 2 - 01-28 February 2025](https://reliefweb.int/report/south-sudan/unicef-south-sudan-humanitarian-situation-report-no-2-01-28-february-2025)**

Situation Report

Source: [UNICEF](/organization/unicef)

Posted: 30 Apr 2025

Originally published: 30 Apr 2025

[World](/country/wld) + 10 more **[Los primeros 100 días de una creciente emergencia mundial de salud y humanitaria](https://reliefweb.int/report/world/los-primeros-100-dias-de-una-creciente-emergencia-mundial-de-salud-y-humanitaria)**

News and Press Release

Source: [MSF\(/organization/msf\)](#)

Posted: 25 Apr 2025

Originally published: 25 Apr 2025

World(/country/wld) + 10 more **[The first 100 days of a growing global health and humanitarian emergency\(https://reliefweb.int/report/world/first-100-days-growing-global-health-and-humanitarian-emergency\)](https://reliefweb.int/report/world/first-100-days-growing-global-health-and-humanitarian-emergency)**

News and Press Release

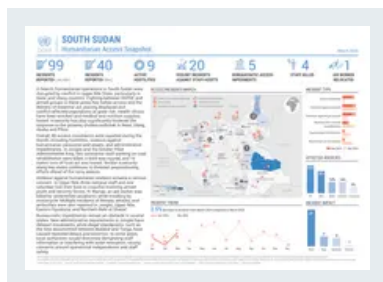
Source: [MSF\(/organization/msf\)](#)

Posted: 24 Apr 2025

Originally published: 24 Apr 2025

[View all South Sudan: Cholera Outbreak - Oct 2024 Updates](#)

Maps and Infographics

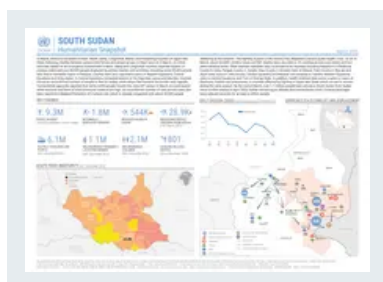


South Sudan(/country/ssd) **[South Sudan: Humanitarian Access Snapshot \(March 2025\)\(https://reliefweb.int/report/south-sudan/south-sudan-humanitarian-access-snapshot-march-2025\)](https://reliefweb.int/report/south-sudan/south-sudan-humanitarian-access-snapshot-march-2025)**

Source: [OCHA\(/organization/ocha\)](#)

Posted: 23 Apr 2025

Originally published: 23 Apr 2025



South Sudan(/country/ssd) + 1 more **[South Sudan: Humanitarian Snapshot \(March 2025\)\(https://reliefweb.int/report/south-sudan/south-sudan-humanitarian-snapshot-march-2025\)](https://reliefweb.int/report/south-sudan/south-sudan-humanitarian-snapshot-march-2025)**

Source: [OCHA\(/organization/ocha\)](#)

Posted: 14 Apr 2025

Originally published: 9 Apr 2025



South Sudan(/country/ssd) + 1 more **South Sudan: Humanitarian Snapshot (February 2025)**(<https://reliefweb.int/report/south-sudan/south-sudan-humanitarian-snapshot-february-2025>).

Source: [OCHA\(/organization/ocha\)](https://reliefweb.int/organization/ocha).

Posted: 29 Mar 2025

Originally published: 29 Mar 2025

[View all South Sudan: Cholera Outbreak - Oct 2024 Maps and Infographics](#)

Other disasters affecting the countries

South Sudan: Floods - Jul 2024(<https://reliefweb.int/disaster/fl-2024-000145-ssd>).

Status: Ongoing

Disaster type: [Flood\(/disasters?list=Flood%20Disasters&advanced-search=%28TY4611%29\)](#).

Affected country: [South Sudan\(/country/ssd\)](#).

South Sudan: Hepatitis E Outbreak - Sep 2023(<https://reliefweb.int/disaster/ep-2023-000263-ssd>).

Status: Ongoing

Disaster type: [Epidemic\(/disasters?list=Epidemic%20Disasters&advanced-search=%28TY4642%29\)](#).

Affected country: [South Sudan\(/country/ssd\)](#).

South Sudan: Measles - Dec 2022(<https://reliefweb.int/disaster/ep-2023-000048-ssd>).

Status: Ongoing

Disaster type: [Epidemic\(/disasters?list=Epidemic%20Disasters&advanced-search=%28TY4642%29\)](/disasters?list=Epidemic%20Disasters&advanced-search=%28TY4642%29).

Affected country: [South Sudan\(/country/ssd\)](/country/ssd).