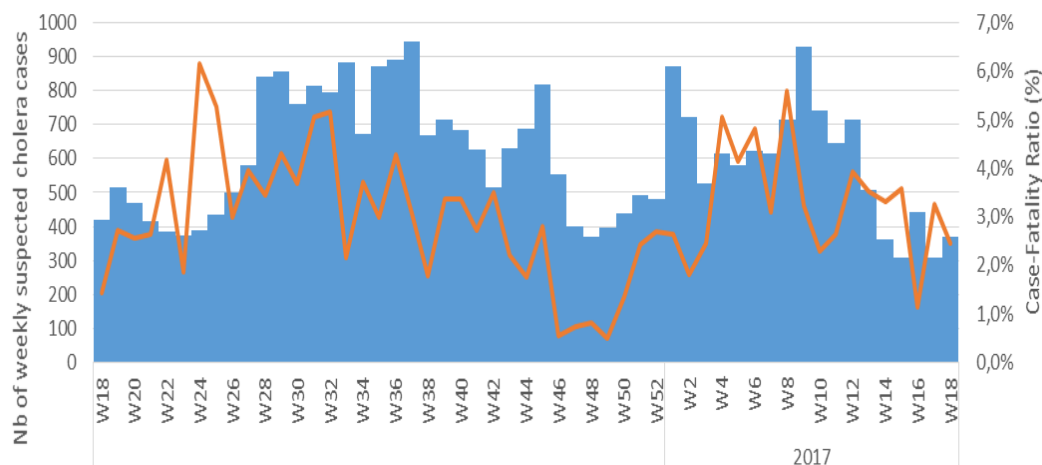


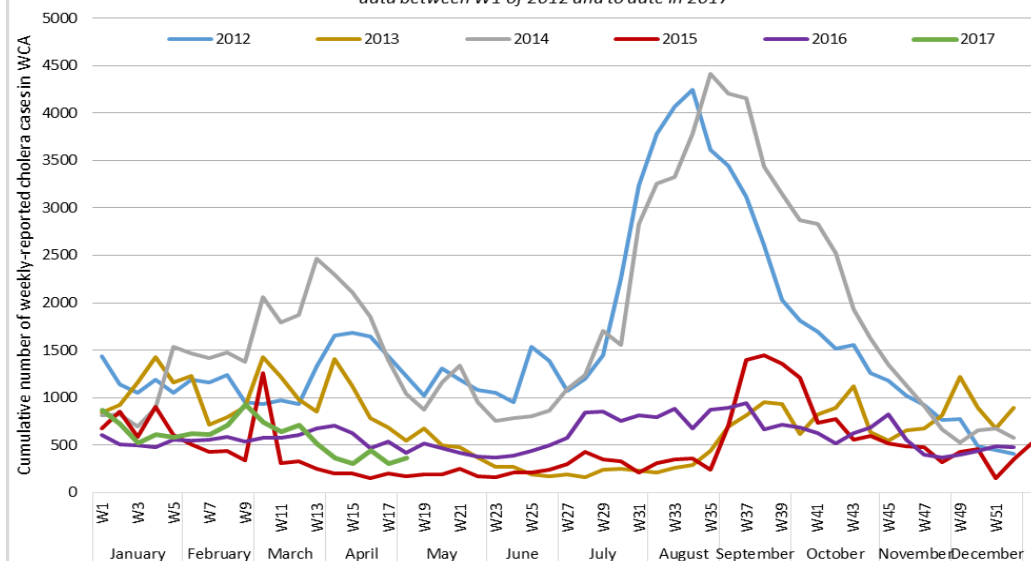
Country Name	2017																		Trends on CFR 2017			Onset 2017		Total suspected 2017			Cases in 2016	
	W1	W2	W3	W4	W5	W6	W7	W8	W9	W10	W11	W12	W13	W14	W15	W16	W17	W18	W16	W17	W18	Week	Culture	Cases	Deaths	CFR	W1-18	Total
Benin	0	0	0	0	0	0	0	0	0	0	0	0	0	0	0	0	0	0	-	-	-			0	0	-	112	874
Burkina Faso	0	0	0	0	0	0	0	0	0	0	0	0	0	0	0	0	0	0	-	-	-			0	0	-	-	-
Cameroon*	0	0	1	0	0	1	0	14	0	0	0	0	0	1	1	0	0	0			-			18	0	-	2	78
Central African Republic	0	0	0	0	0	0	0	0	0	0	0	0	0	0	0	0	0	0	-	-	-			0	0	-	-	265
Chad	0	0	0	0	0	0	0	0	0	0	0	0	0	0	0	0	0	0	-	-	-			0	0	-	-	-
Congo	0	0	0	0	0	0	0	0	0	0	0	0	0	0	0	NC	NC	NC	-	-	-			0	0	-	-	18
Congo (RD)	870	695	525	606	568	621	605	697	914	738	640	704	480	357	298	374	305	368	1,1%	3,3%	2,4%	continuity of 2016		9 692	341	3,5%	9 661	28 170
Cote d'Ivoire*	0	0	1	0	3	0	1	0	2	0	4	2	1	2	0	0	NC	NC		-	-		1 Negative	16	0	-	4	16
Ghana	2	4	0	0	0	0	0	0	2	0	0	0	0	0	0	NC	NC	NC	-	-	-	end declared feb.		8	0	-	1	740
Guinea	0	0	0	0	0	0	0	0	0	0	0	0	0	0	NC	NC	NC	NC	-	-	-			0	0	-	-	-
Guinea Bissau	0	0	0	0	0	0	0	0	0	0	0	0	0	0	0	0	0	0	-	-	-			0	0	-	-	-
Liberia *	1	0	0	0	4	1	6	3	3	2	2	7	8	2	2	68	2	NC	1,5%	0,0%	#DIV/0!	W12	1 positive	109	5	4,6%	120	155
Mali	0	0	0	0	0	0	0	0	0	0	0	0	0	0	0	0	0	0	-	-	-			0	0	-	-	-
Mauritanie	0	0	0	0	0	0	0	0	0	0	0	0	0	0	0	0	0	0	-	-	-			0	0	-	-	-
Niger	0	0	0	0	0	0	0	0	0	0	0	0	0	0	0	0	0	0	-	-	-			0	0	-	-	38
Nigeria	0	24	1	7	5	0	1	0	7	1	0	1	20	0	7	1	NA	NA	-	-	-	Week 2	1 positive	75	4	5,3%	204	768
Sénégal	0	0	0	0	0	0	0	0	0	0	0	0	0	0	0	0	0	0	-	-	-			0	0	-	-	-
Sierra Leone	0	0	0	1	0	1	0	0	0	0	0	0	0	0	0	0	1	NA	-	-	-		RDT *	2	0	-	-	-
Togo	0	0	0	0	0	0	0	0	0	0	0	0	0	0	0	0	0	0	-	-	-			0	0	-	-	2
Lake Chad River Basin	-	24	2	7	5	1	1	14	7	1	-	1	20	1	8	1	-	-						93	4	4,3%	206	884
Congo River Basin	870	695	525	606	568	621	605	697	914	738	640	704	480	357	298	374	305	368						9 692	341	3,5%	9 661	28 453
Guinea Gulf Basin	3	4	1	1	7	2	7	3	7	2	6	9	9	4	2	68	3	-						135	5	3,7%	237	1 787
WCAR	873	723	528	614	580	624	613	714	928	741	646	714	509	362	308	443	308	368						9 920	350	3,5%	10 104	31 124

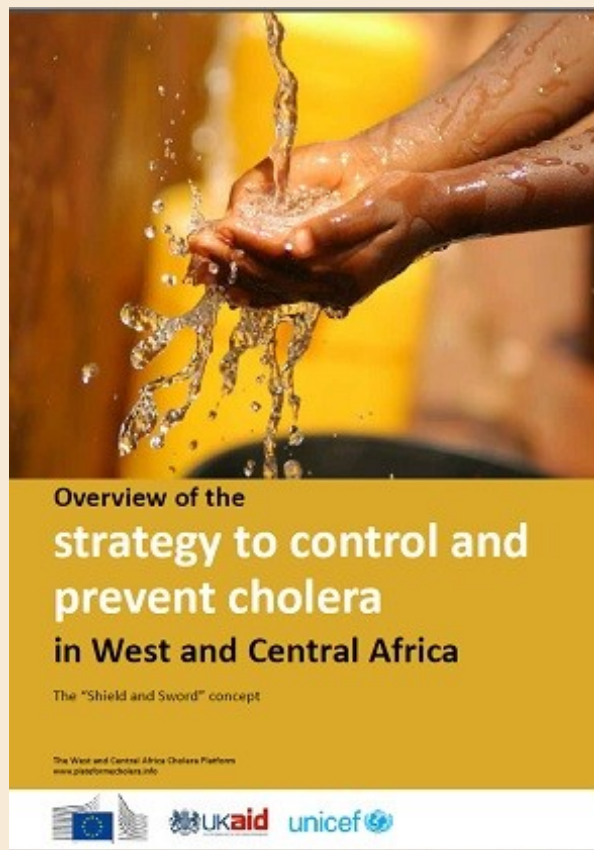
NA : Not Available. * Liberia, Cameroon and Cote d'Ivoire surveillance systems are recording and reporting suspected cholera cases.

Nb cas cumulés et taux de létalité hebdomadaire - S18 2016 à S18 2017
cumulated cases and CFR - W18 2016 to W18 2017



Evolution of the weekly-reported cholera cases for 19 countries in West and Central Africa
data between W1 of 2012 and to date in 2017





The “Shield and Sword” concept, a common language for a proactive, cross-border and multi-disciplinary strategy to prevent the spread of cholera

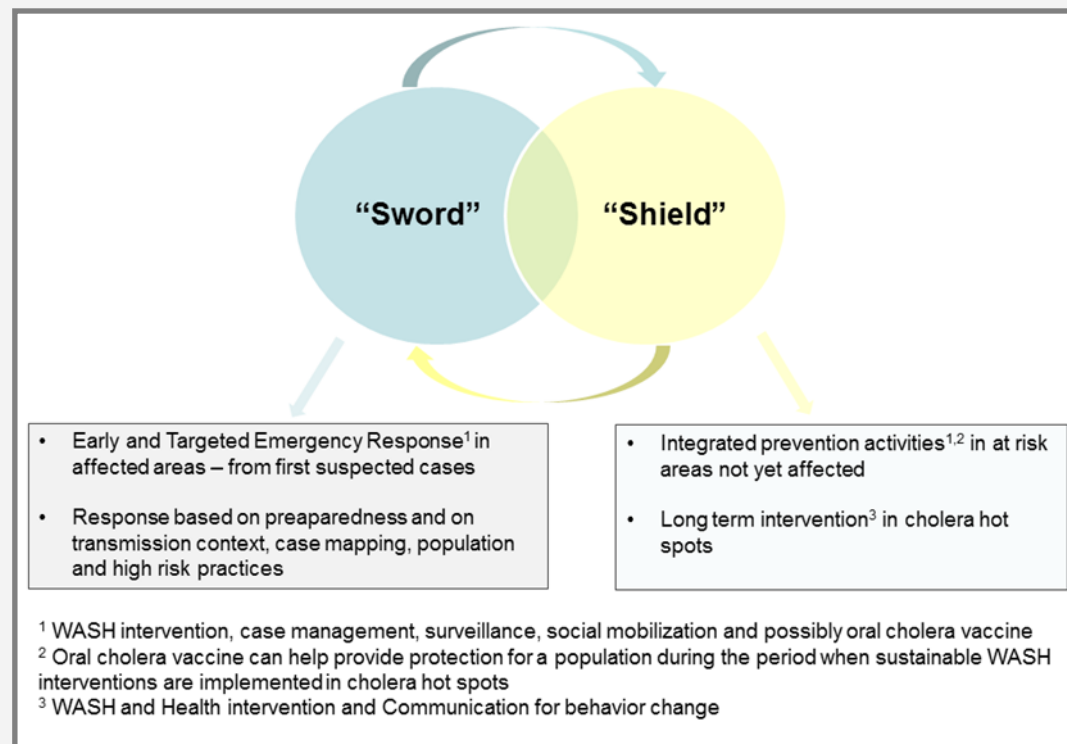
Building bridges between emergency response and development programs

Achieving national commitment from WASH and health stakeholders to strongly engage in comprehensive strategies to eliminate cholera

Document to be downloaded by clicking on the image or through the cholera platform website www.platformecholera.info

Sword and shield strategy against cholera

This strategy is using a risk-informed and evidence-based approach, through continued operational research and multidisciplinary studies that expand knowledge and efficiency in cholera preparedness, emergency response and long-term intervention. Epidemiologists, WASH specialists, health professionals, anthropologists and community mobilization specialists have been working together to achieve one common overarching goal: the elimination of cholera.



Stratégie Bouclier / Coup de poing contre le cholera

Cette stratégie est fondée sur une approche basée sur l'analyse du risque et des évidences et connaissance développée, grâce à une recherche opérationnelle continue et à des études pluridisciplinaires qui soutiennent l'expansion des connaissances et de l'efficacité dans la préparation au choléra, les interventions d'urgence et l'intervention à long terme. Les épidémiologistes, les spécialistes de WASH, les professionnels de la santé, les anthropologues et les spécialistes de la mobilisation communautaire travaillent ensemble pour atteindre un objectif commun: l'élimination du choléra.